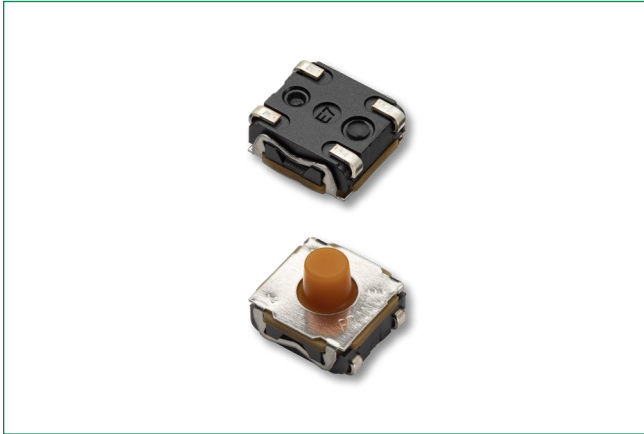


# KSC4 Series

Sealed Tactile Switch for SMT 6.2 x 6.2 mm,  
with 5.2 mm Height Soft Actuator



## Description

The KSC4 series of sealed tact switches for SMT are IP67 rated, 5.2mm high soft actuator tactile switches. They meet the size and performance requirements of products with small surface areas, but can also withstand harsh elements like vibration and shock. The KSC4 switches are perfect for industrial, consumer and automotive applications.

## Features & Benefits

- Positive adaptable tactile feeling
- Soft actuator 5.2mm high
- IP67

## Applications

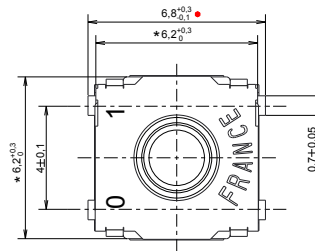
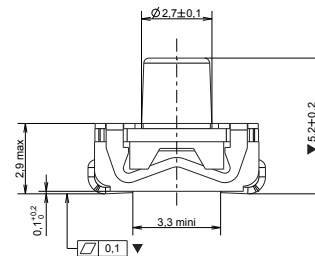
- Industrial electronics
- Consumer products
- Transportation

### Specifications

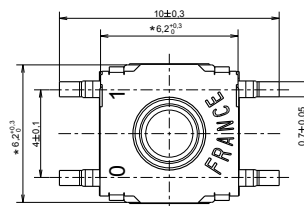
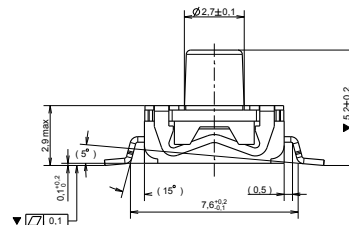
<b>Function</b>	Momentary action
<b>Contact Arrangement</b>	1 make contact = SPST, N.O.
<b>Terminals</b>	J bend & Gullwing type for SMT
<b>Sealing</b>	IP67
<b>Packaging</b>	Switches delivered on continuous tape & reels of 1,000 pieces Dimensions according to EIA RS-481/ IEC 60286-3 standard External diameter 330 ± 2 mm

**Note:** Specifications listed above are for switches with standard options. For information on specific and custom switches, consult Customer Service Center. Detect switch versions are available. Please see Detect chapter KSR2D/M series.

### J Dimensions (mm)



### G Dimensions (mm)



# KSC4 Series

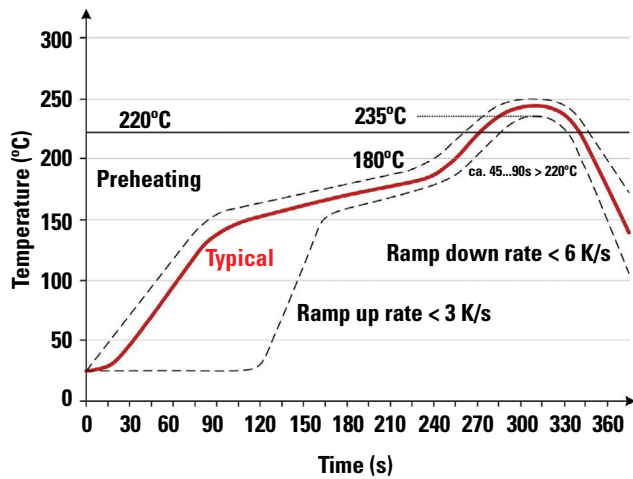
Sealed Tactile Switch for SMT 6.2 x 6.2 mm,  
with 5.2 mm Height Soft Actuator



### Mechanical Characteristics

Part #	Operating Force FA (Newtons)	Operating Life (operations)	Travel (mm)
KSC401 50SH	1.45 ± 0.55	5,000,000	0.5 ± 0.25
KSC411 70SH	1.4 ± 0.35	1,000,000	0.35 ± 0.20
KSC421 70SH	1.7 ± 0.45	300,000	0.5 ± 0.25
KSC422 70SH	1.7 ± 0.45	1,000,000	0.5 ± 0.25
KSC434 70SH	2.75 ± 0.75	1,000,000	0.55 ± 0.25
KSC441 70SH	4 ± 1	300,000	0.75 ± 0.25
KSC442 70SH	4 ± 1	1,000,000	0.75 ± 0.25
KSC451 70SH	4.25 ± 0.75	300,000	0.8 ± 0.2
KSC441 SPD	3.5 ± 0.9	300,000	0.7 ± 0.2
KSC441 ST1	3.4 ± 1	300,000	0.7 ± 0.25
KSC441 ST2	3.4 ± 1	300,000	0.35 ± 0.20
KSC461 ST1	6.25 ± 1.75	100,000	1 ± 0.3
KSC461 ST2	6.25 ± 1.75	300,000	0.5 ± 0.2

### Soldering Profile

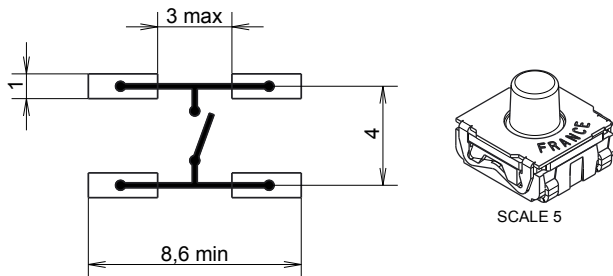


Note: Up to 2 reflow cycles in accordance with the above temperature profile

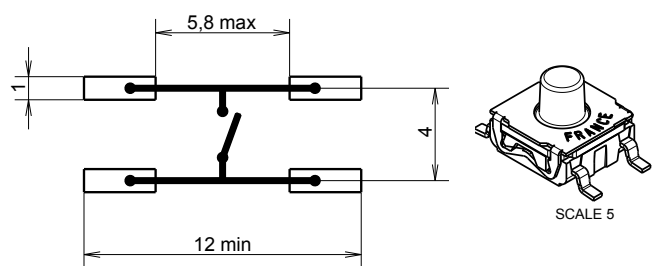
Soldering process: Depending on the application, this component is suited to the following methods:

- Terminals being silver or gold plated over a nickel barrier, the use of slightly activated flux is suitable.
- Lead free soldering process in accordance with the definition on the left.

### J Terminations

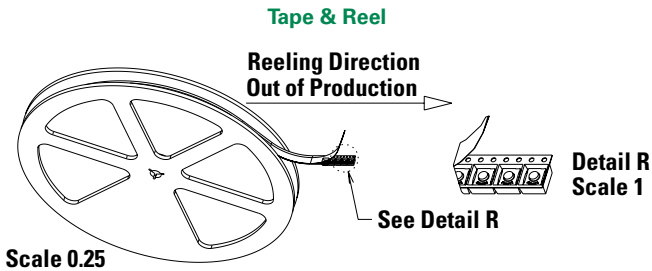


### G Terminations



# KSC4 Series

Sealed Tactile Switch for SMT 6.2 x 6.2 mm,  
with 5.2 mm Height Soft Actuator

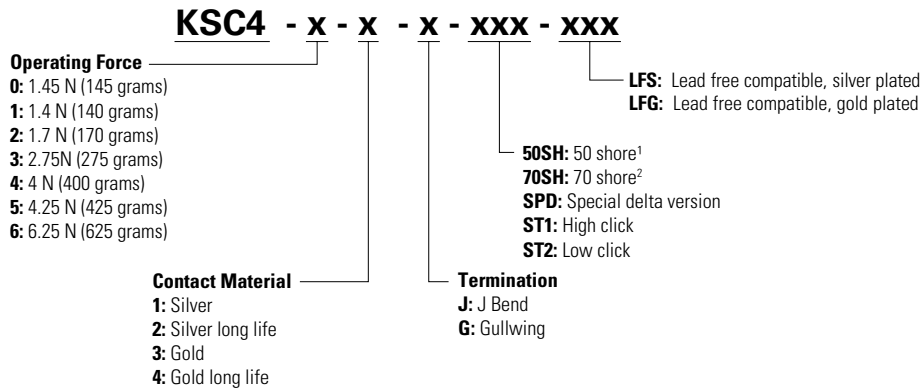


**Packaging Details**

Type	Tape & reel
Number of Parts in Packaging	2,000
Other Information	Tape and reel per EIA 481
Transport Conditions	According to specification NF H00-060

### Ordering Number

Our easy build-a-switch concept allows you to mix and match options to create the switch you need. To order, select desired option from each category and place it in the appropriate box. However, please note that all the combinations of these options are not feasible. For any part number different from those listed above, please consult your local representative.



**Notes:**

1. Applies to KSC401J/G50SH only
2. Applies to KSC411J/G70SH, KSC421J/G70SH and KSC441J/G70SH

### Liability Limitation

This datasheet does not provide enough information for applications that require a certain level of quality or safety such as automotive, medical systems, or safety equipment. Please contact customer service for the contractual specification package.

**Disclaimer Notice** - Information furnished is believed to be accurate and reliable. However, users should independently evaluate the suitability of and test each product selected for their own applications. Littelfuse products are not designed for, and may not be used in, all applications. Read complete Disclaimer Notice at <http://www.littelfuse.com/disclaimer-electronics>.